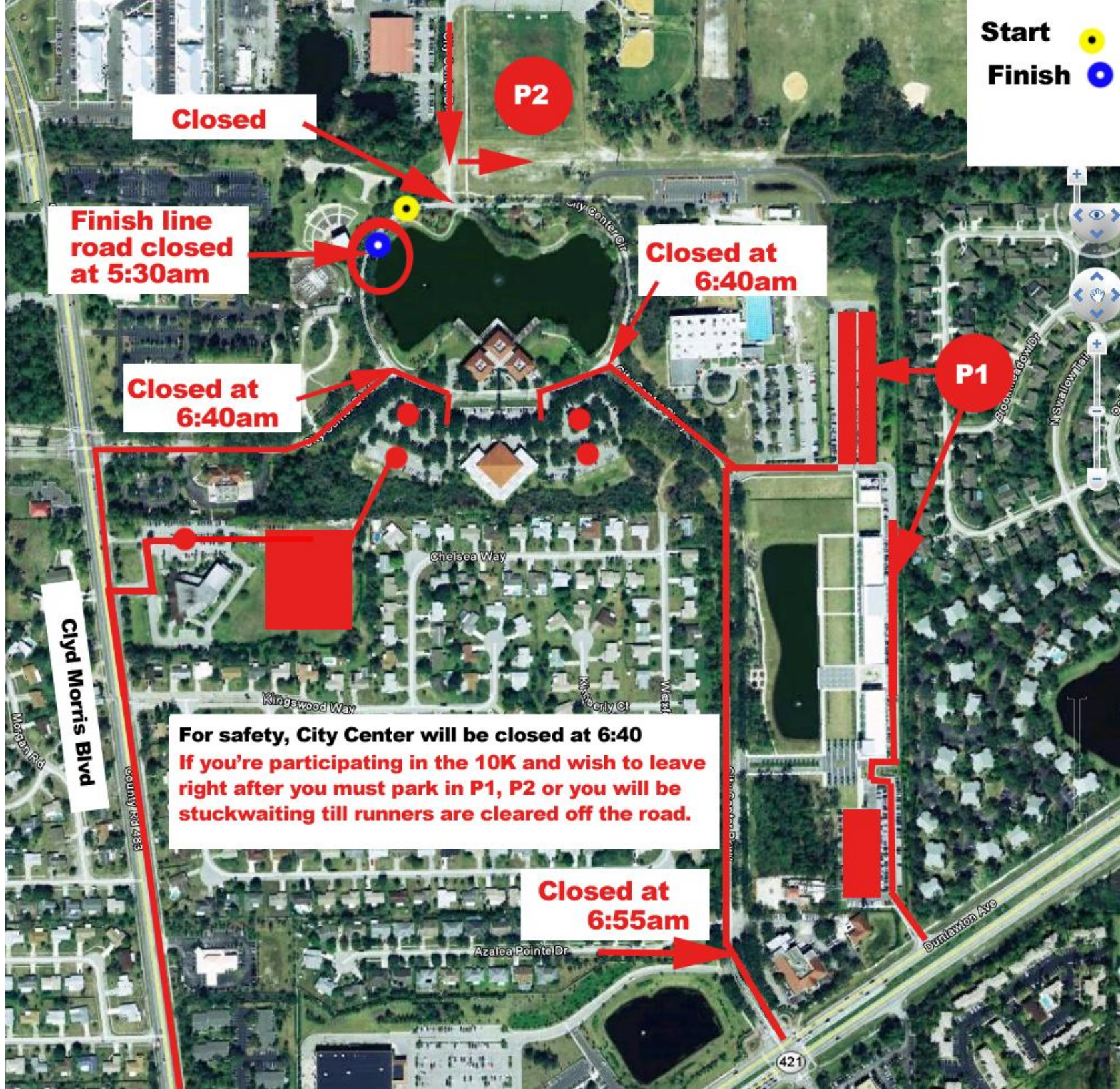


Start ●
Finish ●



Closed

P2

Finish line road closed at 5:30am

Closed at 6:40am

Closed at 6:40am

P1

Clyd Morris Blvd

For safety, City Center will be closed at 6:40
If you're participating in the 10K and wish to leave right after you must park in P1, P2 or you will be stuck waiting till runners are cleared off the road.

Closed at 6:55am

421